

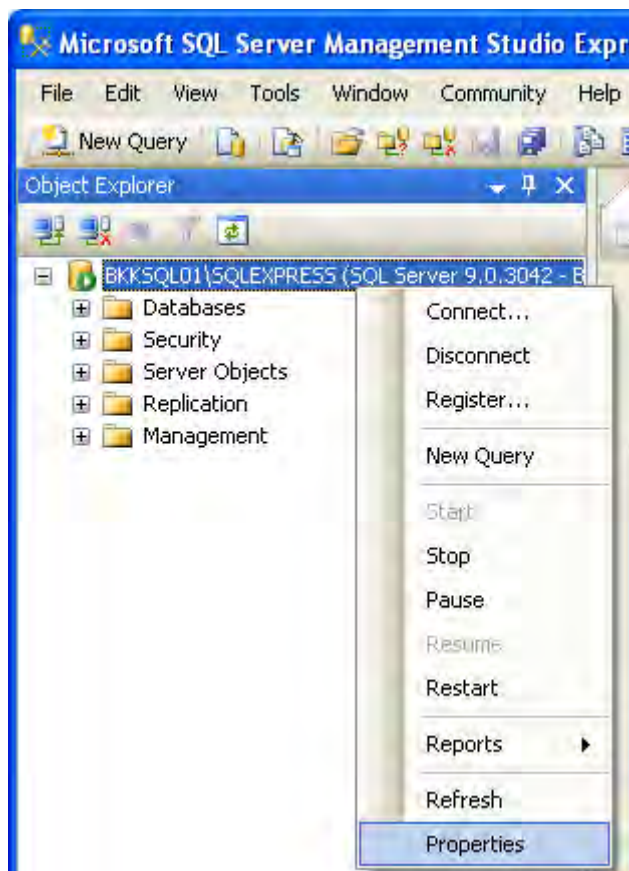
9. SQL Server Configuration

9.1. SQL Server setup

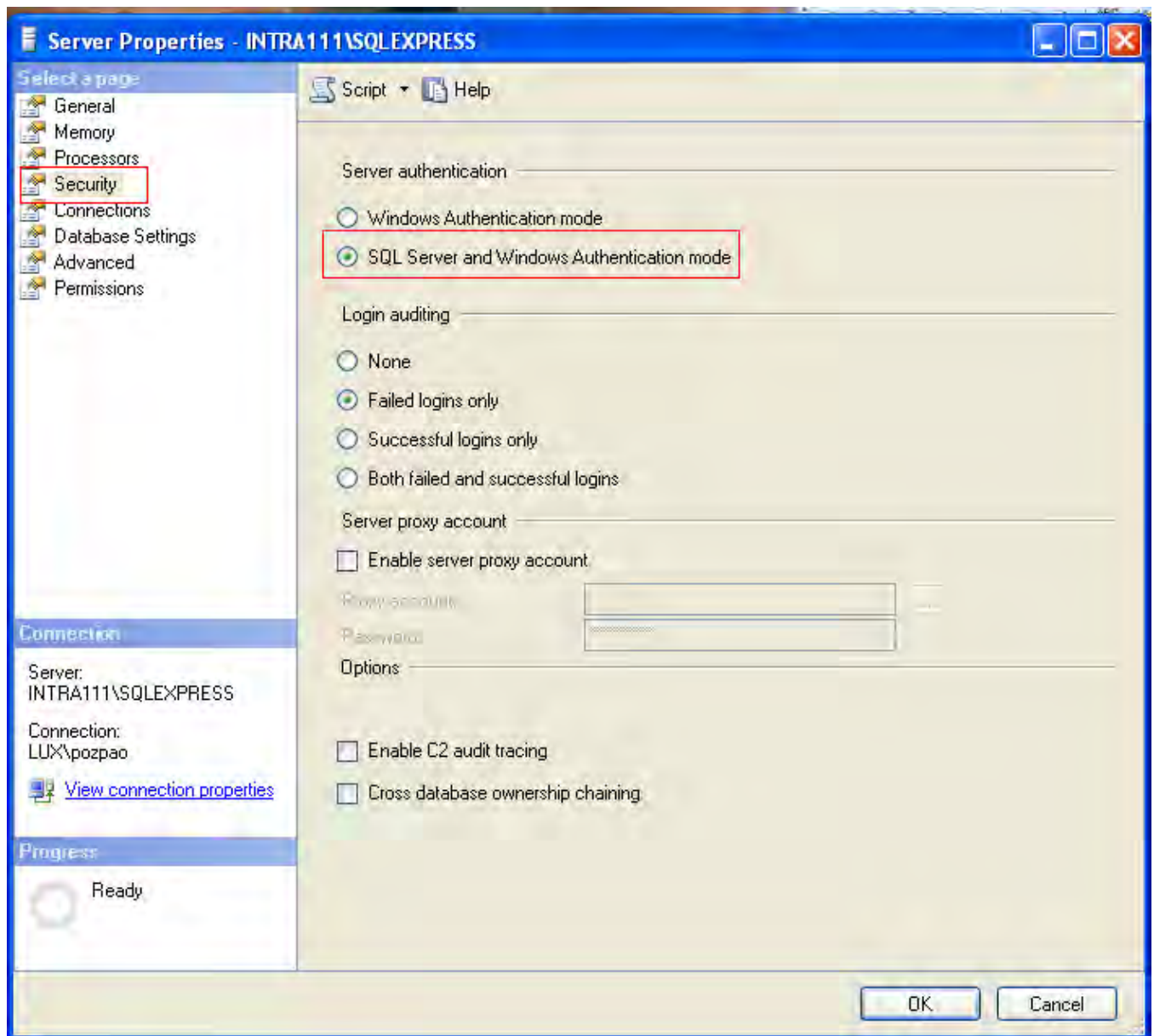
Set up sql server 2005 to accept local and remote connections:

You need SQL server and Window authentication to connect with user name and password to the remote server.

Open SQL server Management Studio. In Object Explorer, right click on the instance name and select Properties.



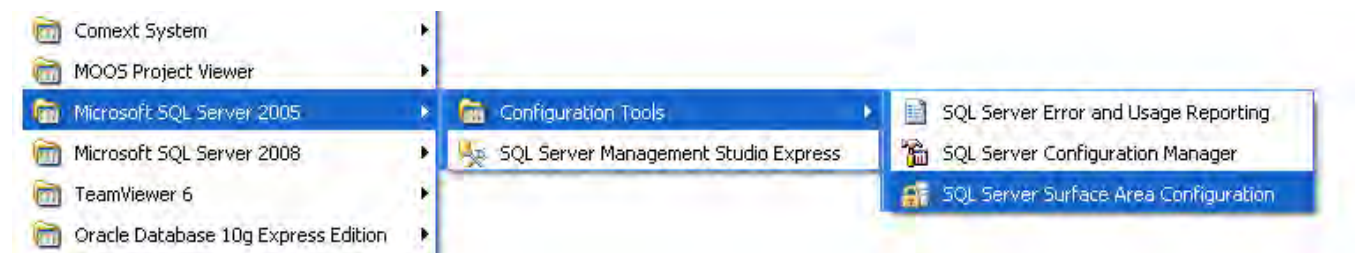
On the left, select Security and change Server authentication to SQL Server and Windows Authentication mode. If the choice is already selected, that means you have already allowed SQL Server authentication.



To be able to work both in local and remote we need to enable communications via TCP-IP and pipes.

First of all we enabled remote connection on SQL Server Surface Area Configuration

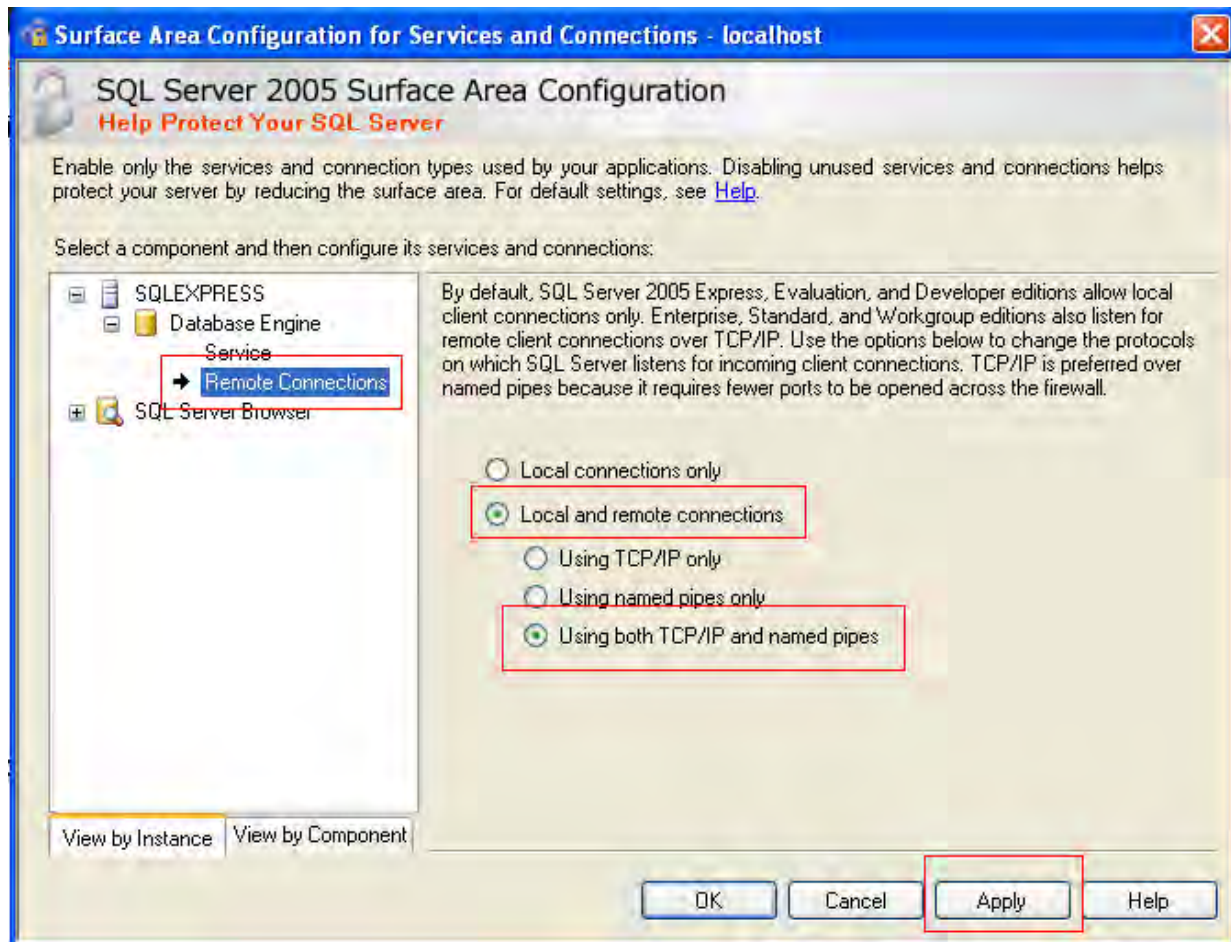
Open SQL Server Surface Area Configuration from start-all programs-microsoft sql server 2005 – configurations tools- SQL Server Surface Area Configuration



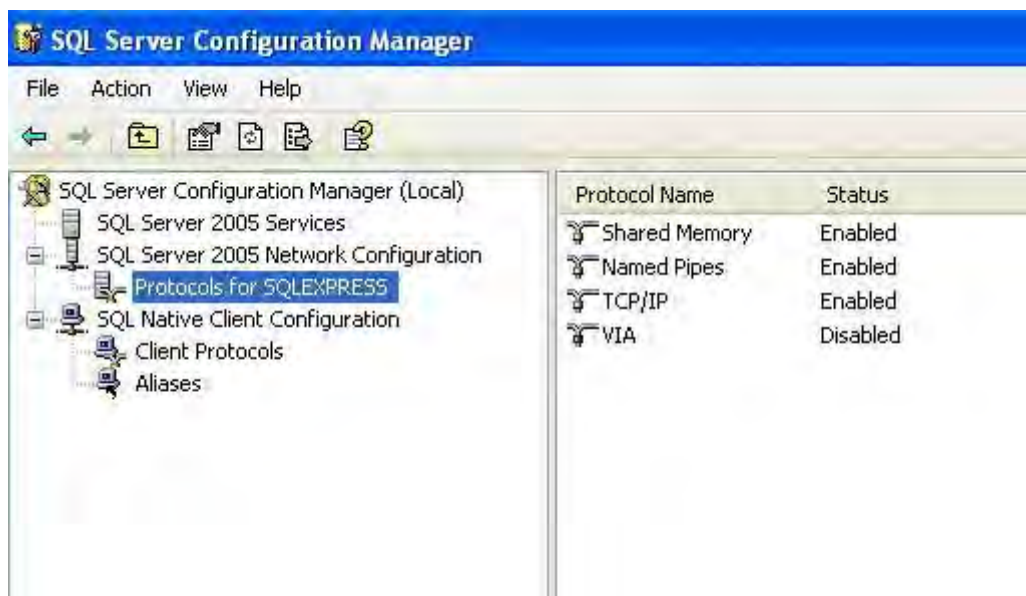
Select Surface Area Configuration for Services and Connections.



On the left side, expand your SQL Server instance -> Database Engine -> Remote Connections. On the right side, select Local and remote connections -> using both TCP/IP and named pipes.



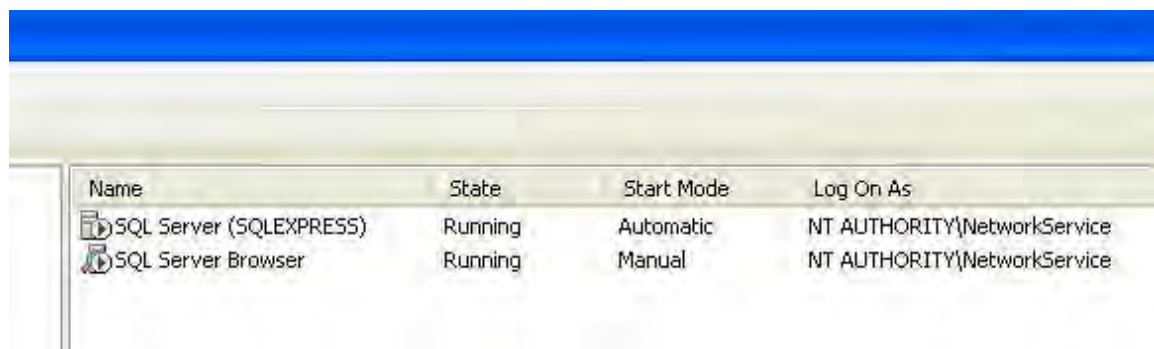
Now in the Sql configuration manager we enable shared memory, pipes and TCP-IP in server protocols:



And client protocols:



Restart sqlexpress and browser services, being sure that are running as network services

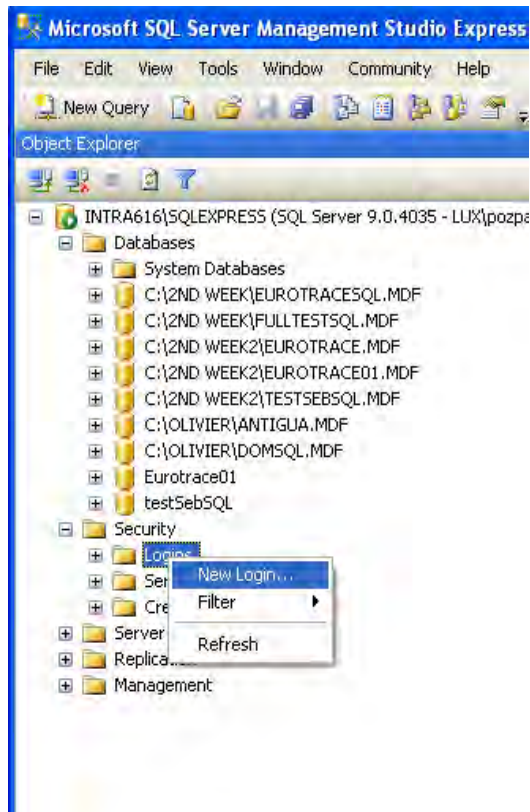


All the previous steps must be done in both client and server machines.

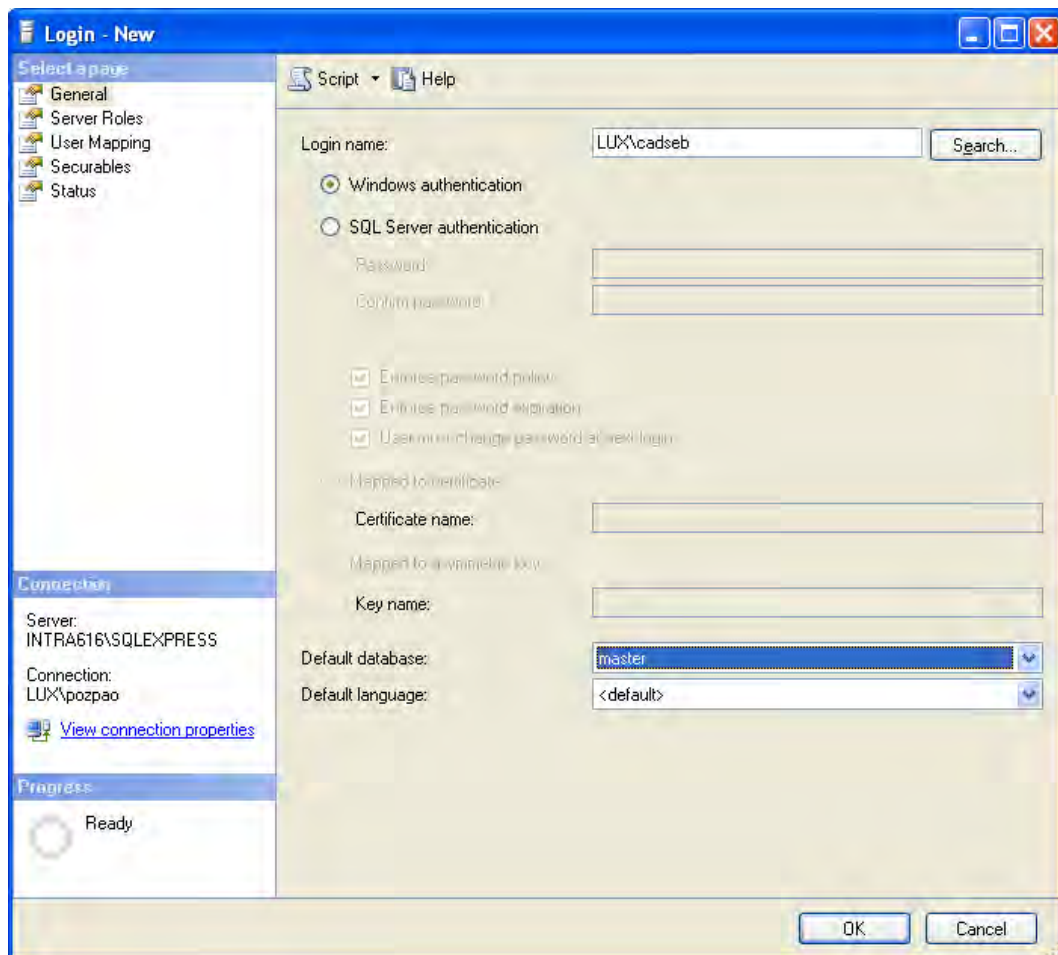
9.2. User account on remote machine

Give generic access on the remote machine to a specific user:

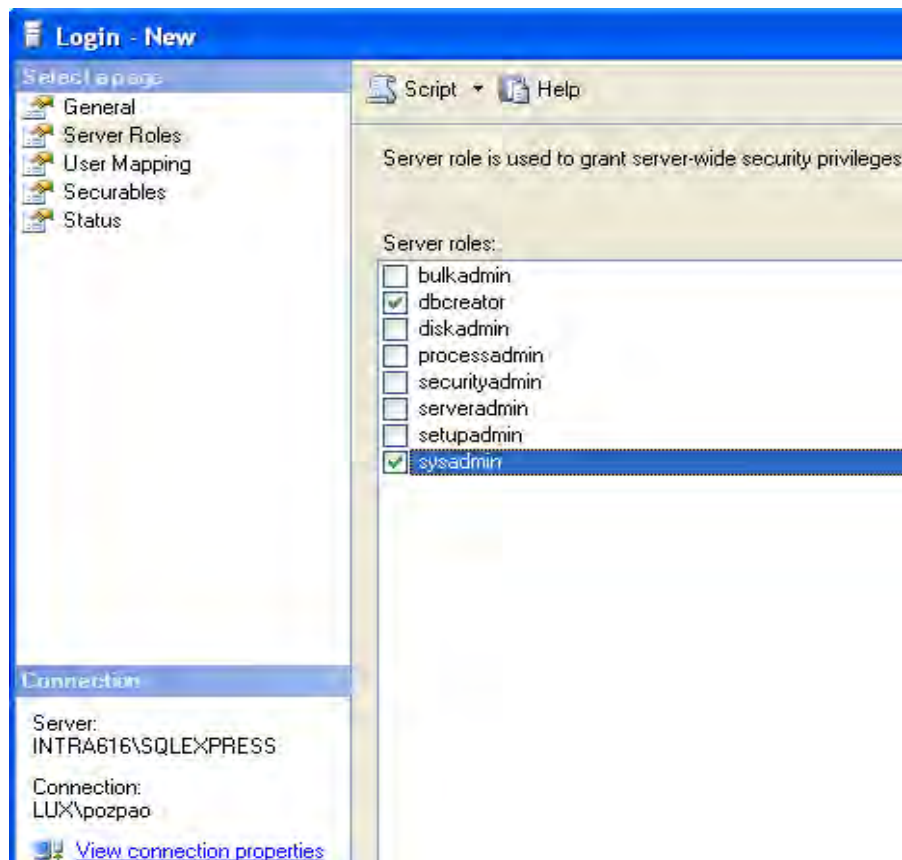
In the remote machine, using the SQL server management studio, select security/logins/new login



Write on the top of the new dialog the new user name you want to add



Then click on Server Roles and set the privileges for this user



Click on OK and the user will be able now to connect remotely with the server.

Give access to an existing database on the remote machine to a specific user:

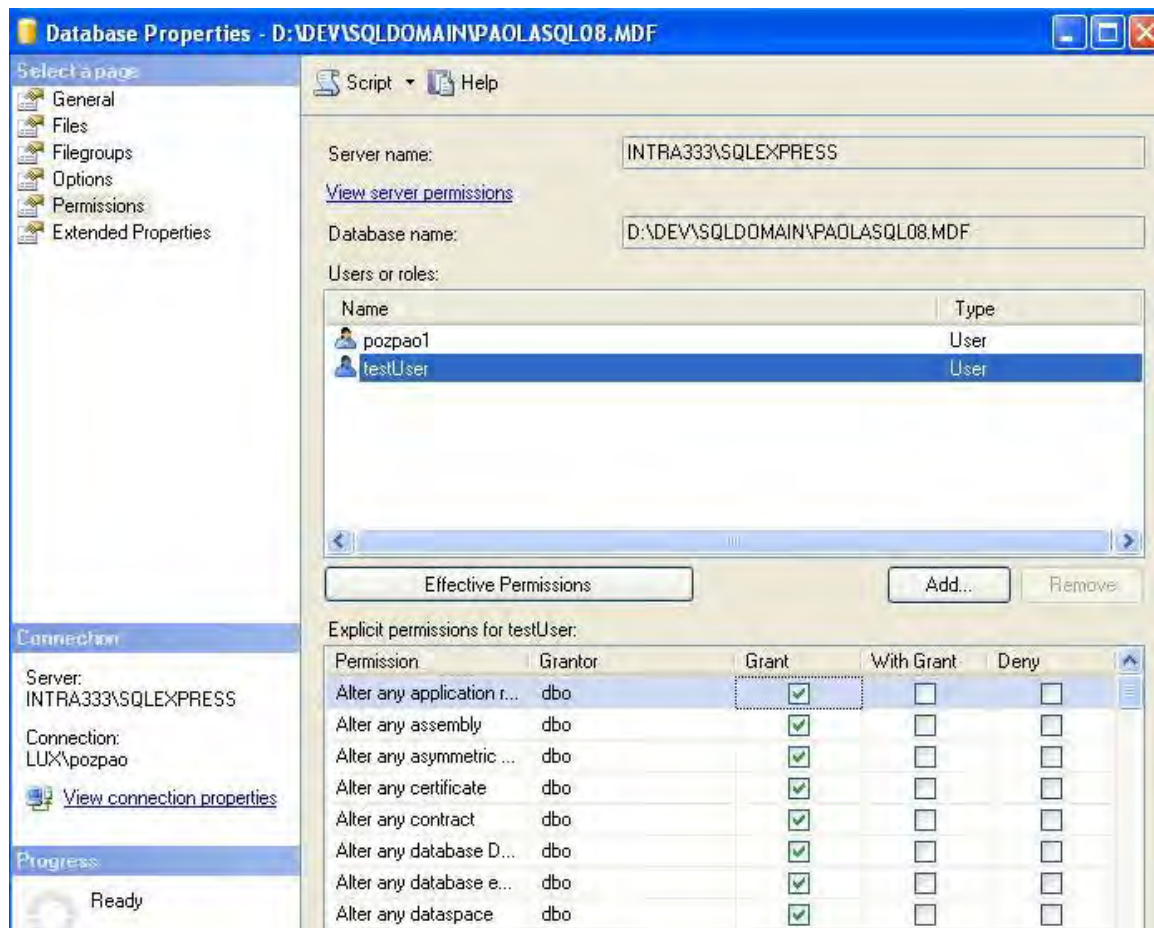
In the server machine we have now to create a user account for the remote user in the sqlserver manager tool run the query:

```
CREATE USER testUser
CREATE LOGIN testUser with password = 'testPassword'
```

then you have to grant privileges to the user.

On the DB list right click on the instance name and select Properties - permissions.

You should have a window with the user name just defined. You should click in ALL the permissions for this user (valid only for that database).



Now restart sqlserver 2005 services (application and browser).

Now the connection to the remote database is ready.

9.3. Eurotrace Parameters

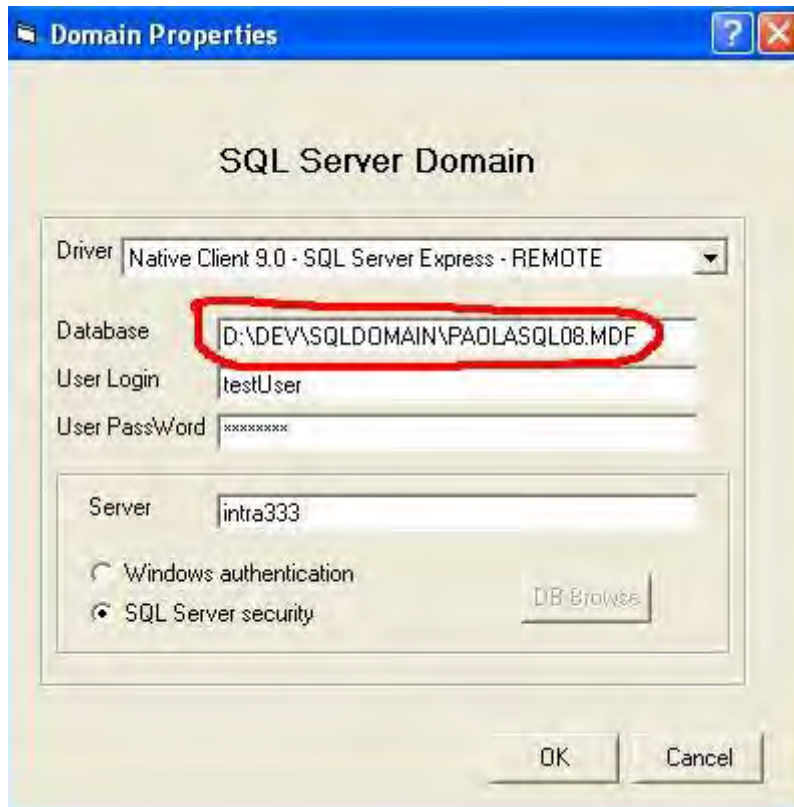
You must be able to use your user account in the remote machine (in this example, the userTest login just defined).

For sql express use Use option 2 in the drop down menu (or option 8 if you are using native client 10.0).

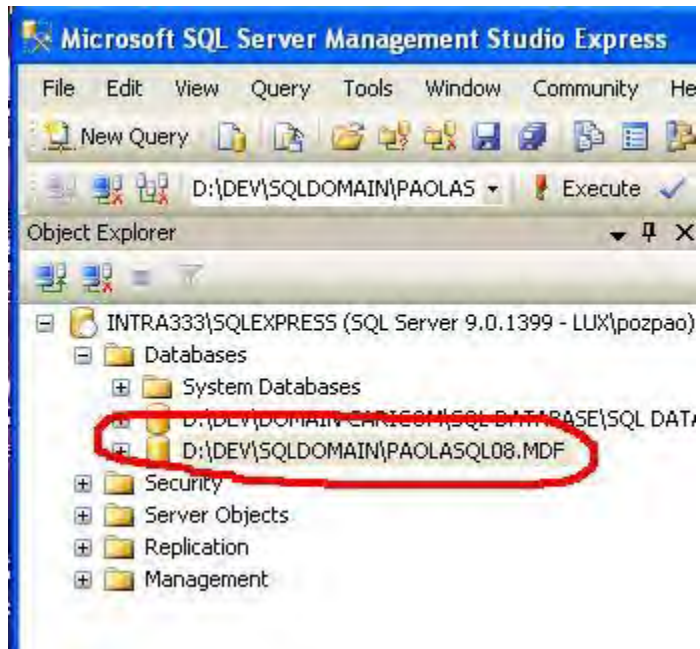
For SQL 2005 standard edition, use option 3.

For SQL Express in the local machine use option 1.

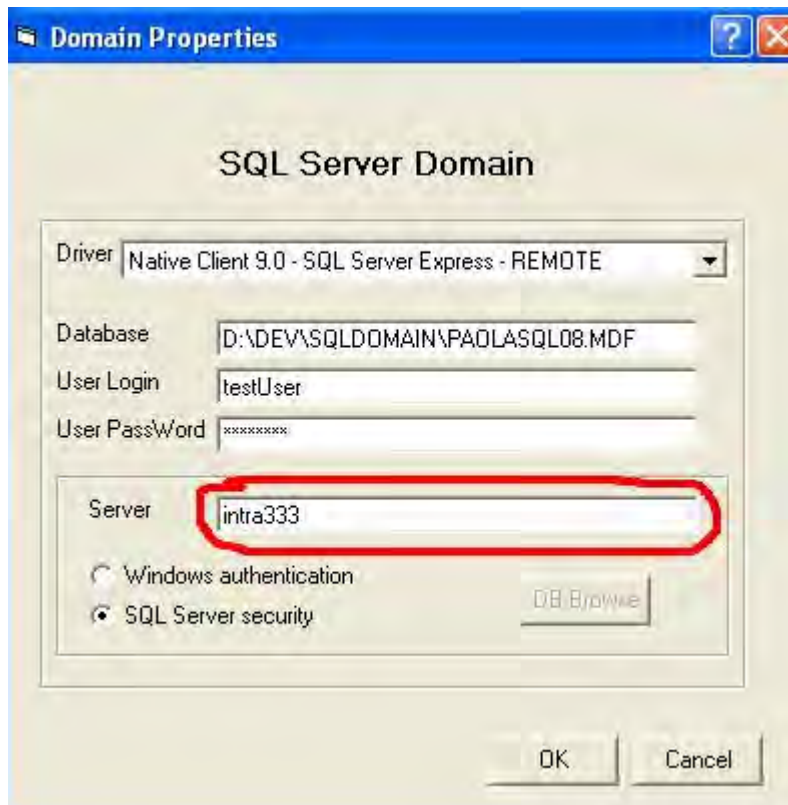
9.4. Eurotrace database field



In the database field write exactly the name as you see it in the database list and that you already used in the query to create the user account:



9.5. Eurotrace server field



If you connect to **2005 STANDARD edition** use the same name as you see in the login window of the SQL server Management Studio when you login:

